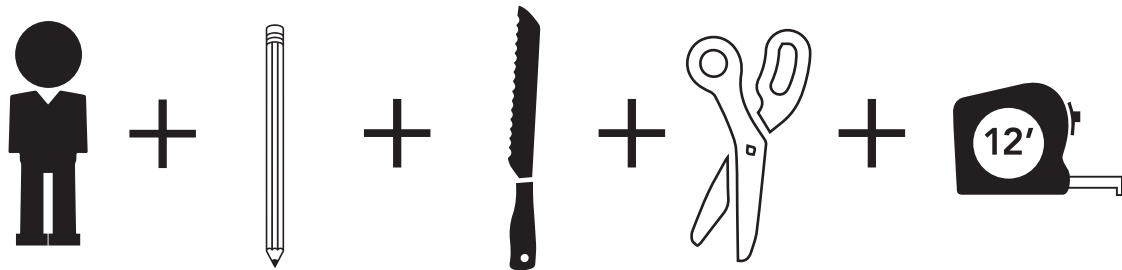
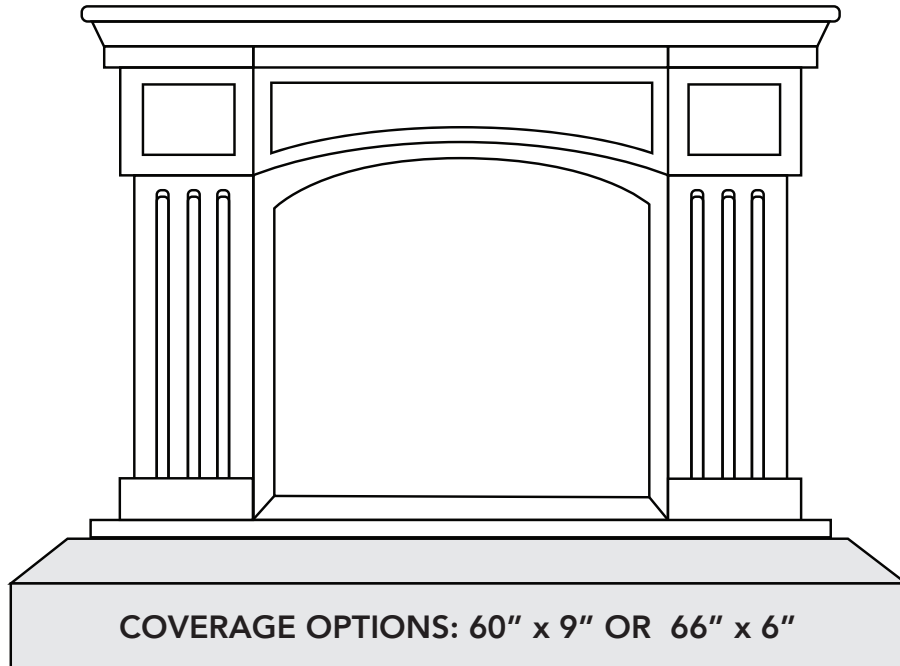


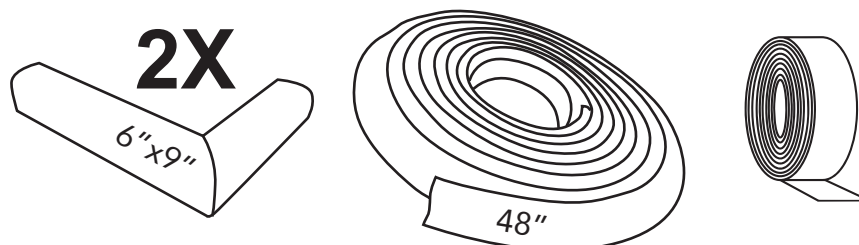
HEARTH PAD KIT ASSEMBLY INSTRUCTIONS



CUTTING TOOL:
Use a bread knife or
a similar serrated knife.

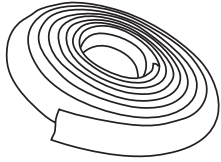
WE RECOMMENDED INSTALLATION WITHOUT CHILDREN PRESENT.

ASSEMBLY PARTS

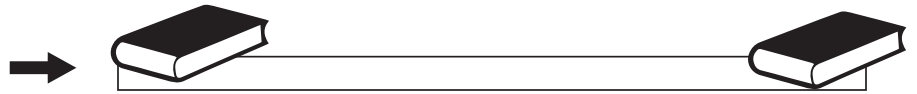




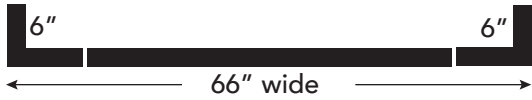
**DAY BEFORE
INSTALLATION**



PREPARATION



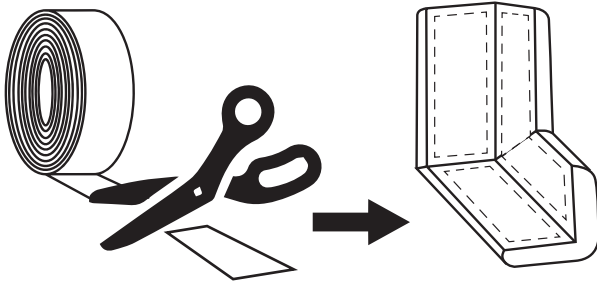
The night before installation, roll out the foam hearth edge. Place weighted objects on each end — not over heavy to crush foam's structure.



COVERAGE OPTIONS

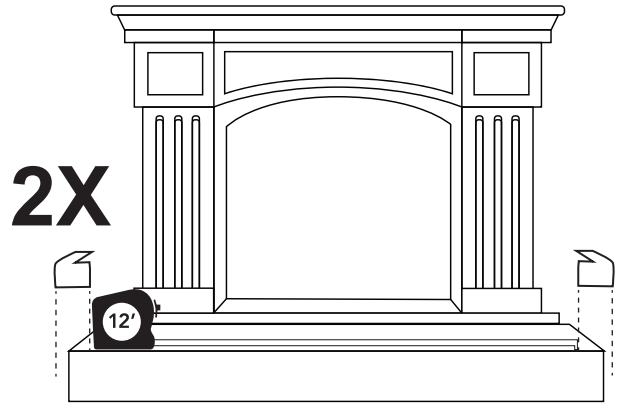


- 1** Cut double-sided tape to lengths to fit on the inside of both corner pieces.

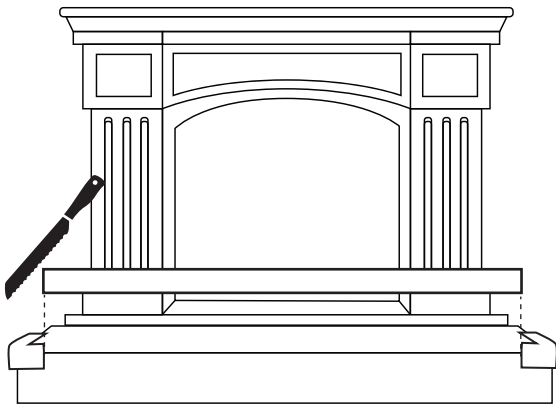


Cut double-sided tape to lengths to fit on the inside of both corner pieces.

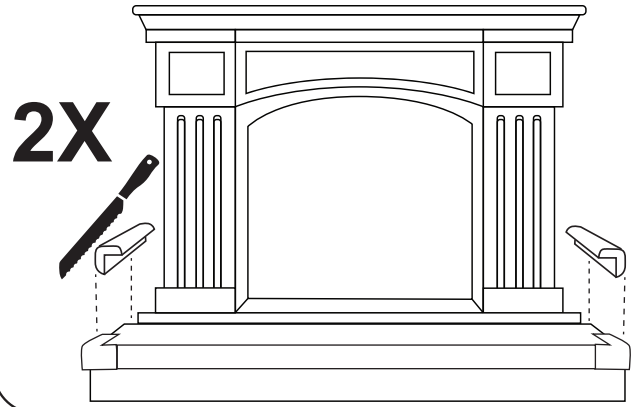
- 2** Take second side of tape off and install the corner pieces on hearth. Then measure the gap.



- 3** Cut gap measurement out of Hearth Guard. Add tape (like STEP ONE) and install.



- 4** Measure and cut end pieces. Add tape and install.



CLEANING: Rubbing alcohol works best to remove dirt.



CARDINAL GATES
SAFETY PRODUCTS FOR CHILDREN, PETS & HOMES

(770) 252-4200

Toll Free (800) 318-3380

www.cardinalgates.com

 MADE IN THE U.S.A.